

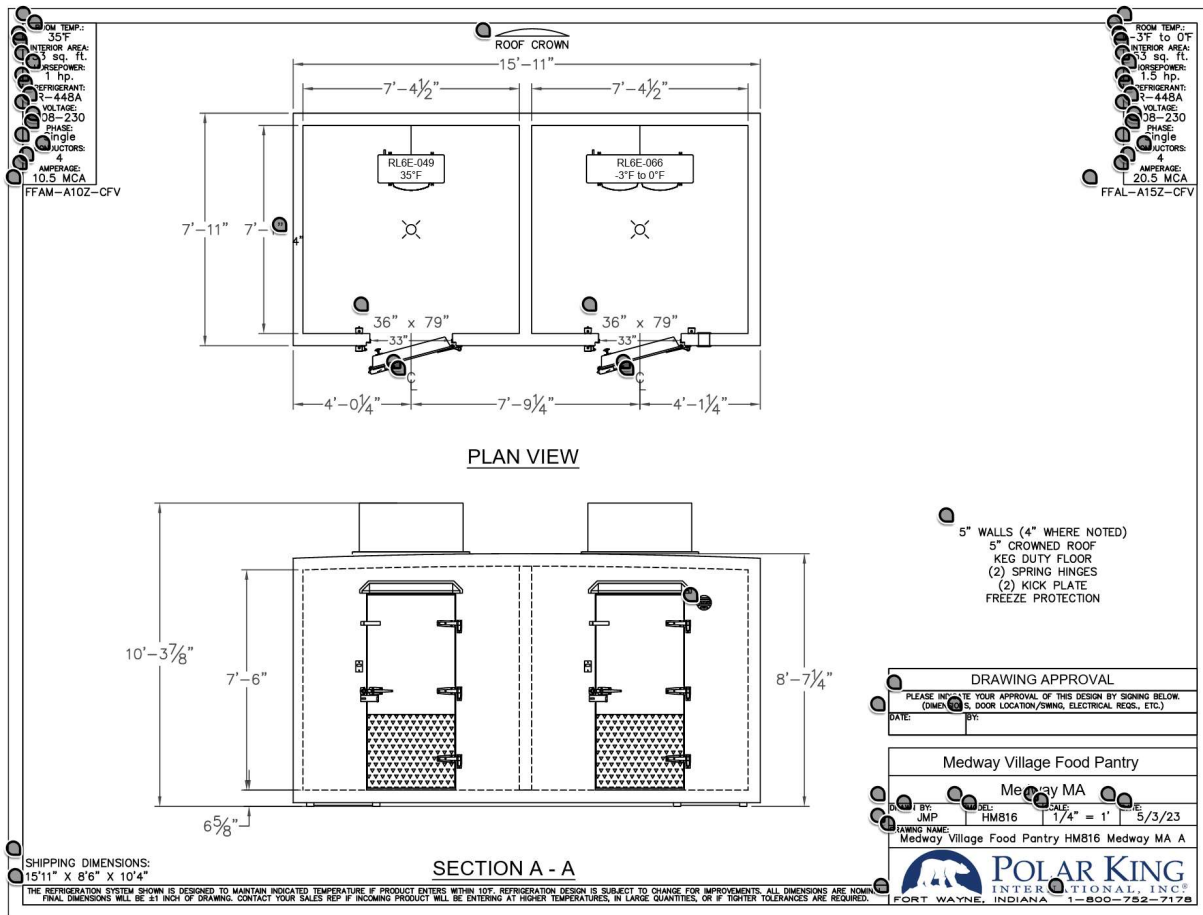
Photo of Outdoor Walk-In Cooler/Freezer
at Current Location (Medway Village Church)



This is the walk-in cooler/freezer we will be installing, with dimensions of 8' x 16'.

Picture shows the electrical wiring needed for installation as well as examples of the safety bollards we intend to install.

Design Specifications for Polar King Outdoor Walk-In Cooler/Freezer



These are the complete dimensions of the walk-in cooler/freezer:

- Unit height = 8' 7.25"
- Unit height including compressors = 10' 3.875"
- Unit width = 15'11"
- Unit depth = 8'

Photo of the Rear of Unit 3



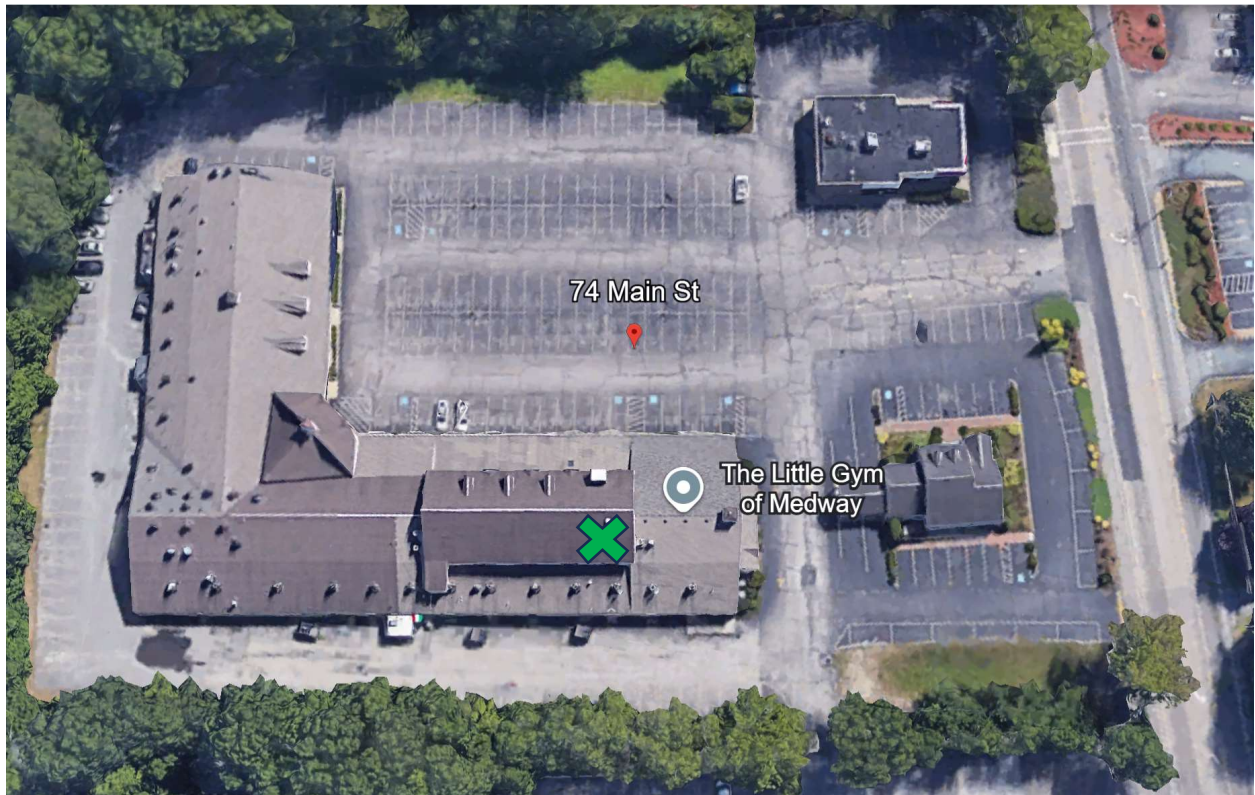
- Blue lines indicate the borders of Unit 3
- Green box indicates where rear entry will be modified to double door width to accommodate a pallet.
- White box is approximately location behind unit where outdoor walk-in will be placed
- Gutters and downspouts will be adjusted as needed for walk-in installation

Photo of the Rear of All Units, Including Existing Concrete Pad



- Blue lines indicate rear of Unit 3
- There is an existing concrete pad behind neighboring tenant, adjacent to our unit. Per landlord, pad does not belong to other tenant.
- Concrete pad measures roughly 9.5' deep by 19' wide, which is larger than the dimensions of the outdoor walk-in we plan to install (walk-in measures 8' deep x 16' wide).

Aerial View of 74 Main Street (Gould's Plaza – Medway Shoppes)



The green X on each photo indicates the location of Unit 3



